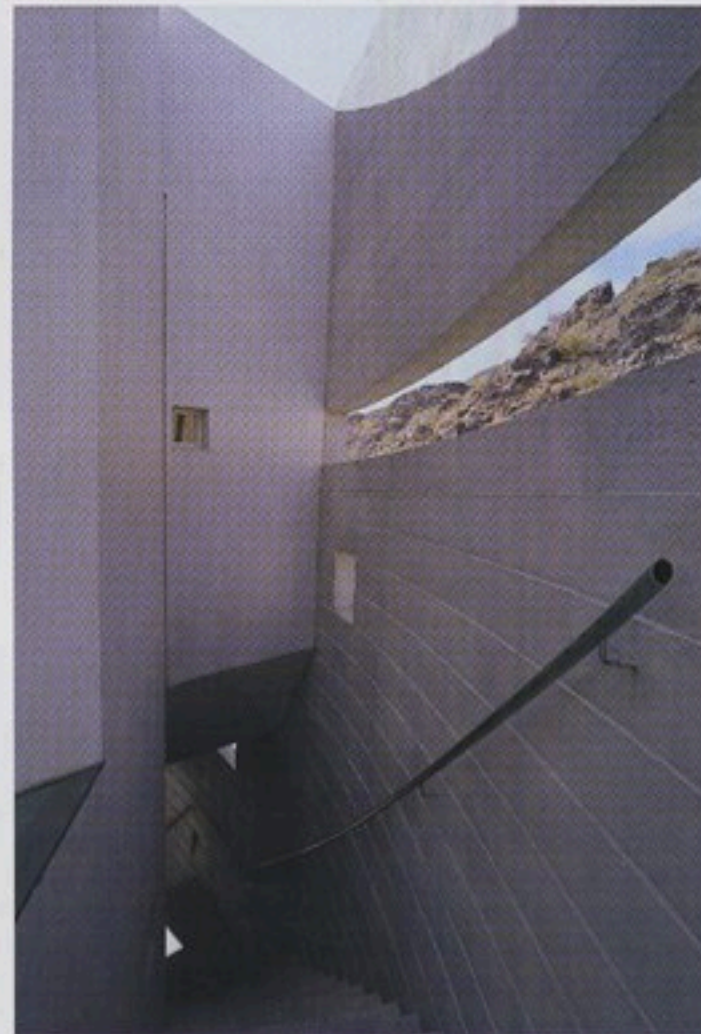
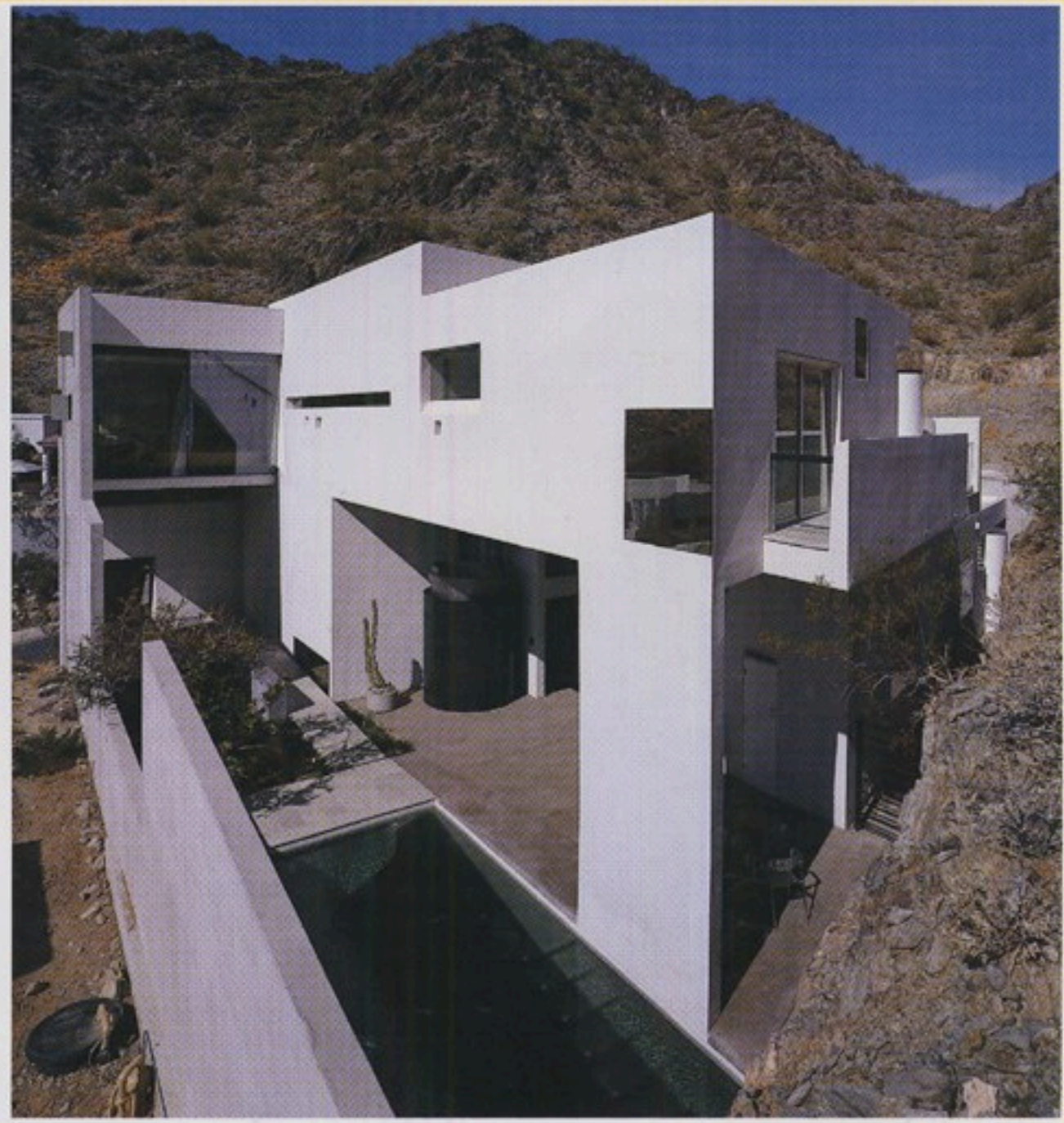




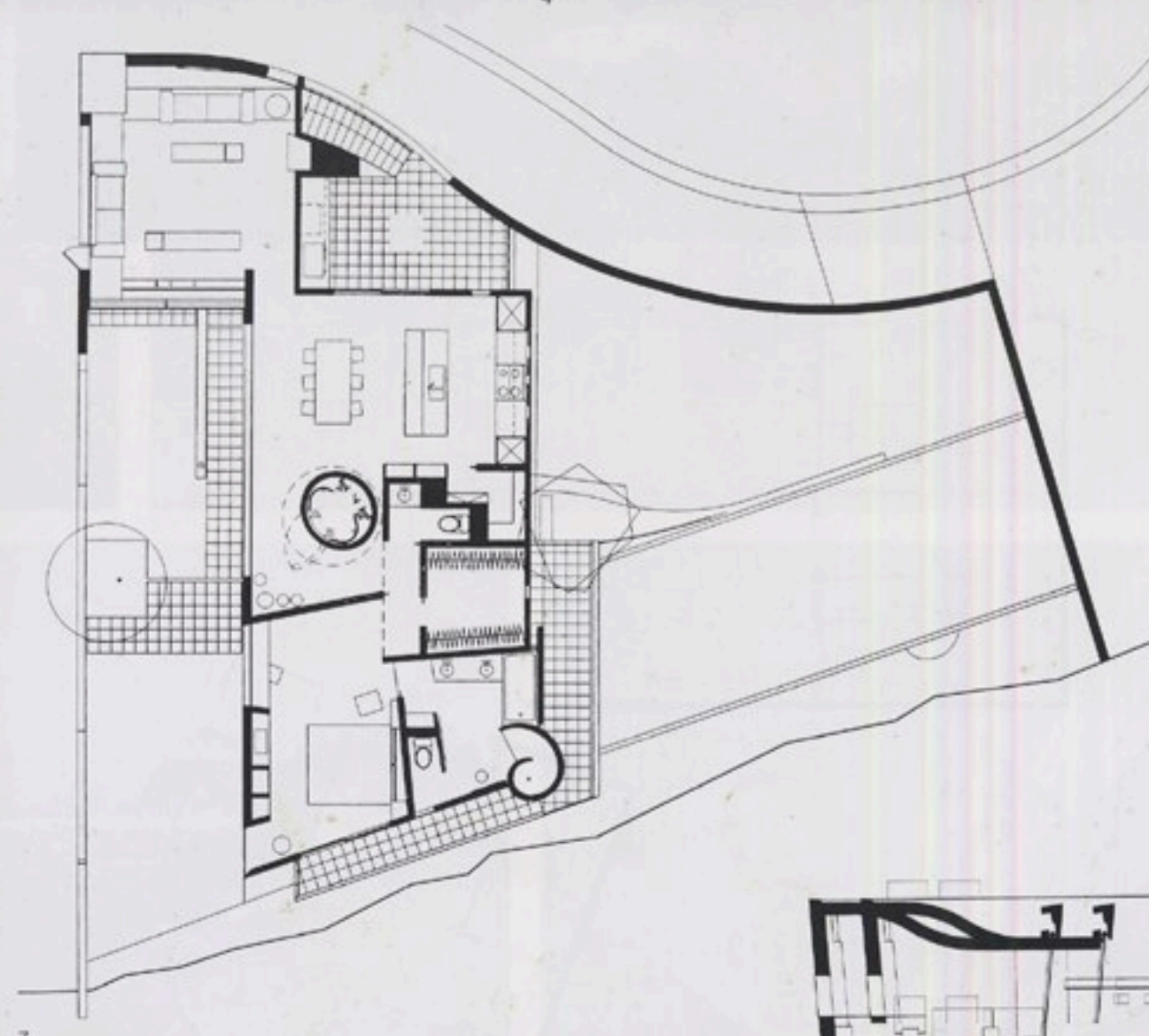
THE  
PHAIDON  
ATLAS

OF CONTEMPORARY  
WORLD  
ARCHITECTURE  
TRAVEL EDITION

PHAIDON



**916** With a site in a nondescript residential development on the outskirts of Phoenix, the architect's aim was to edit out the uninspiring context through the use of carefully framed vistas. This was achieved by creating a walled courtyard at ground level and placing the living areas above this, taking advantage of the distant mountain views. The compound's entrance is through a dramatic corbelled wall, which is canted over the street. Inside, the carport has been transformed by landscape architect Debra Burnette, the architect's wife, into a desert garden. Just beyond the front gate, a passage opens out into a patio tucked beneath the second floor, and the courtyard with its fountain and swimming pool. The spiral procession through the house can be made either on foot, or via a custom-made elevator that travels up a glass-roofed, cylindrical, wood-framed shaft. On the second floor are a barbecue terrace and an evaporative cooling tower, one of many passive environmental devices incorporated into the design. Beyond this are the main living quarters, consisting of a kitchen, dining and living areas, a bedroom and bathrooms. Stepping out of the elevator, you immediately confront a 6-metre (20-foot) strip window framing the mountain view – one of the many examples in this house of the architect's sensitive approach to site-specific design.



- 1 The striking corbelled wall through which the house is entered
- 2 The patio and courtyard with pool
- 3 The sinuous form of the house wraps around the edges of the site
- 4 A strip cut out of the perimeter wall frames a view of the mountains
- 5 Entrance
- 6 Interior with strip windows
- 7 First-floor plan
- 8 Section

**Client**  
Withheld  
**Area**  
204m<sup>2</sup>/2,200 sq ft  
**Cost**  
Confidential

