

the new

100 houses

x 100 architects

images
Publishing

Edited by Robyn Beaver

Copyrighted material



1

- 1 North elevation set against windbreak
- 2 Site plan
- 3 East elevation from field

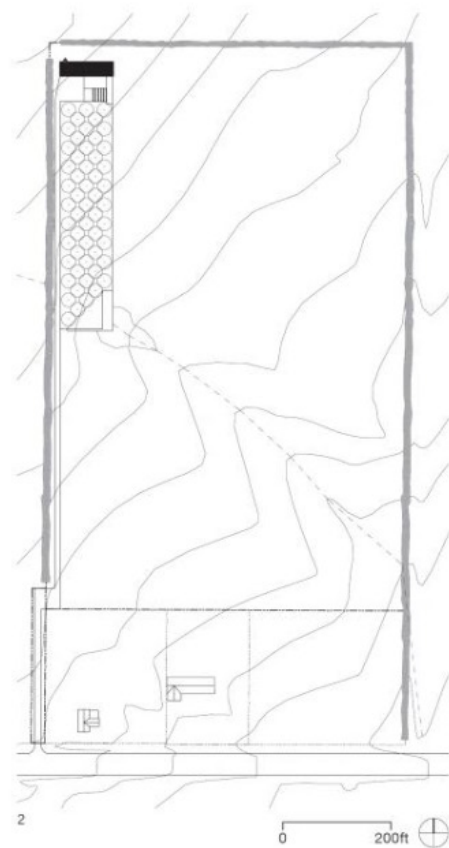
Wendell Burnette Architects

FIELD HOUSE

Ellington, Wisconsin, USA

This house is located in an area of northeast Wisconsin dominated by crop fields and dairy farms, an 'altered landscape' that has been farmed for generations. Stoic utilitarian structures dot the predominantly agrarian scene, quarries harvest the whitest of limestone just below the ground, and native prairie grasses, wetlands, and forests compete for the remaining space. || The client, whose ancestors hail from Lithuania, has the changing seasons of the northern latitudes in his blood. His brief for the house was simply titled 'land, sky, and seasons' and demanded among other things, 'a sense ... of space, of the farmland, of the prairie.' || The site is a 16-acre crop field; its context is understood as a garden with both natural and man-made field conditions. The rotation of crops, planted and fallow fields of corn, soybean, wheat, and oats, along with the apple orchards that hide the occasional pumpkin patch, heighten the sensation of seasonal change. || The field sits behind two existing houses. Turning off the county road, one first glimpses the field. Following the west tree line at the field edge for a

distance, a land bridge crosses the leading edge of a protected wetland, complete with flora and fauna indicative of Wisconsin. After this crossing, the gravel drive is focused between the tree line and the constructed apple orchard. The field is shielded for a time. In the distance, the house is a simple structure in the landscape, an object of utility that only reveals its purpose up close. || The haptic and other sensory qualities of time, memory, and space are subservient to architectural form. **The house is a simple 5000-square-foot box**, clad in a zinc-galvanized metal skin, akin to many constructed objects in the landscape, such as neighboring silos. Its apparent simplicity is articulated by specific moments of experience. These encompass notions of the house as a tunable instrument, to connect with and be responsible to the environment. Manifestations of these ideas include a gallery of 'the art and books of a lifetime,' and a silo ladder that ascends to a secret roof-top observatory whose geometry radiates to the heavens.



2

0 200ft



3



4



7



5



6



8



- 4 South elevation with cedar "barn door" entry
- 5 View from master bedroom to screen porch
- 6 Library at west end with silo ladder to rooftop observatory
- 7 Living space with kitchen of American black walnut
- 8 Upper loft from top of stair
- 9 Roof plan
- 10 Upper level floor plan
- 11 Lower level floor plan

Photography: Bill Timmerman